

## Background

Annaliese Marie Frank was born on June 12th. 1929 in Germany, the second daughter of Otto and Edith Frank.

In 1943, the Nazis came to power in Germany and as a Jew, Otto Frank became very concerned for the safety of his family and decided to move to Amsterdam. Holland had been a neutral country in World War 1 and thought to be a safe haven for religious minorities.

However, after the bombing of Rotterdam in 1940, life began to change for Jews in Holland. The Nazi administration began issuing and carrying out anti-Jewish decrees, stripping Jews of their rights as citizens and human beings. By 1942, the round-up of Jews and their deportation to concentration camps was becoming routine.

Once again, fearful for the lives of their family, Otto and Edith Frank prepared to go into hiding. With the help of Otto's employees, they packed up their belongings and moved into a hiding place, above Otto's warehouse, like the one you see before you.

For two years, eight people occupied these cramped rooms, never leaving the "safety" of the attic for fear of discovery. Just months before the end of occupation, the hiding place was discovered and the families were taken to the Concentration Camps.

Only Otto Frank survived ——— together with Anne's diary. She was one of 1.5 million Jewish children killed by the Nazis through state sanctioned genocide!

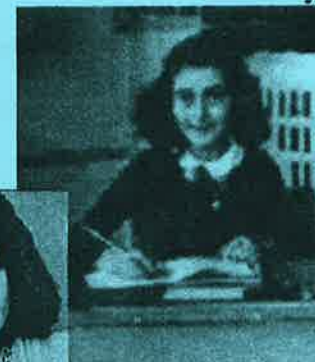
THE DATES OF OUR AUTUMN  
PRODUCTION ARE  
OCTOBER 25th -28th. 2006.  
SEE LOCAL PRESS FOR DETAILS.

**STAGE TWO** **DOWNHAM**  
PRESENTS



# THE DIARY OF ANNE FRANK

Dramatized by Frances Goodrich and Albert Hackett  
from the book: Anne Frank: Diary of a Young Girl



in  
**DOWNHAM VILLAGE HALL**  
AT

**7-30p.m.**

**WED 29th MARCH**

**ADMISSION £4.50**  
(inc. Tea and Biscuits)

# Cast

Mr Frank	Kim Croydon
Miep Gies	Kate Taylor
Mrs Van Daan	Elizabeth Wrigley
Mr Van Daan	David King
Peter Van Daan	Karl Barnsley
Mrs Frank	Glen Purchase
Margot Frank	Lucy Scott
Anne Frank	Rachel Humphreys
Mr Kraler	Eddie Bootle
Mr Dussel	Gerry Purchase

Scenes	Act 1	
1	November 1945	Late afternoon
2	July 1942	Early morning
3	August 1942	A little before 6p.m.
4	September 1942	Midnight
5	December 1942	Night

Scenes	Act 2	
1	January 1944	Late afternoon
2	March 1944	Evening
3	April 1944	Night
4	July 1944	Afternoon
5	November 1945	Late afternoon

Stage Manager	Aled Brewerton
Set Construction	Dan Bradbury
Set Dressing	Rachel Scott
Sound	David Scott
	David King
Lighting	Pat Hargreaves
	David King
Properties	Stephanie Brewerton
Costumes	Margaret Smith
Continuity	Fiona Griffiths
Publicity	Mel Scorah
	Stella Barnes
House Manager	Mel Scorah
	Keith Brewerton
Programme & Poster Design	Brian Haworth

## Directed by Fran Osborne

Thanks are extended to ERIC NOLAN, the producer of Blackburn Dramatic Group's production of Anne Frank, for his help and advice.

Thanks also to COUNTRY FURNITURE, WHALLEY. CLITHEROE LIBRARY and KEITH MITCHEL (THOMAS BRIGGS PRINTERS), BLACKBURN.

Our thanks go to everyone who has helped in any way with this challenging production and for the support given to us by you, the audience.

We hope that you are affected by watching our production as much as we have been during rehearsals.

